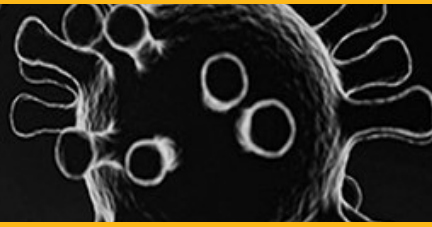


# COVID-19



## COVID-19 - Checklist for police interventions

To determine whether a citizen may be infected with COVID-19, ask him or her the following questions:

1. Are you experiencing apparent symptoms of COVID-19 (coughing, fever and difficulty breathing)?
2. Have you traveled outside Canada in the past 14 days?
3. Is someone around you infected with or displaying symptoms of COVID-19?

### At all times

- Wash your hands frequently.
- Avoid touching your face, mouth, nose and eyes at all times.
- When coughing or sneezing, cover your mouth and nose with your arm to reduce the spread of germs.
- If you use a paper tissue, throw it away as soon as possible and wash your hands.
- When you disinfect, wear nitrile gloves.

### Before leaving the unit

- Make sure you have watched the two video capsules on how to properly use the equipment:
  - Ajustement du masque de protection respiratoire à usage unique (Youtube);
  - Retrait d'un équipement de protection individuelle: Les gants (Youtube);
- Wash your hands frequently.
- Make sure you have the following equipment in the vehicle:
  - nitrile gloves;
  - disinfectant wipes;
  - surgical masks for citizens;
  - plastic bags to throw away contaminated PPE;
  - protective eyewear.



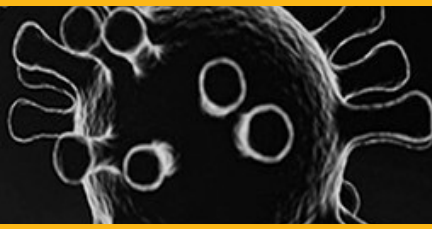
### When you are more than 2 metres from the person, or during brief interventions (less than 15 cumulative minutes per work shift) at less than 2 metres from the person:

- Wear nitrile gloves at all times (search gloves if necessary).
- If possible, maintain a distance of two metres between you and the citizen.
- Before getting into the vehicle, remove your nitrile gloves from the inside out so that they do not directly touch your skin. Throw them away in a waste bin or a closed bag.

### When you are less than 2 metres from the person, regardless of the duration of the intervention, if you have cumulated more than 15 minutes during your work shift:

- When in the presence of the citizen, wear the following personal protective equipment (PPE):
  - a well-fitted and properly removed surgical mask (your face must be clean shaven to ensure a proper fit);
  - nitrile gloves;
  - protective eyewear.
- Ask the citizen to wear a surgical mask (which you provide) and to wash his or her hands as soon as possible.
- After the intervention:
  - remove your protective eyewear and decontaminate it using water and soap or a disinfectant wipe;
  - remove your mask by the straps behind your ears, making sure not to touch the front. Throw it away in a plastic bag;
  - disinfect and clean all the equipment that was touched, used or exposed during the intervention using a disinfectant wipe. Throw the wipe away immediately after use;
  - remove your nitrile gloves from the inside out so that they do not directly touch your skin. Throw them away in a plastic bag to avoid contaminating the waste bin.
- Wash your hands.

# COVID-19



## When transporting a person in the vehicle:

- Remain in the same position (driver or co-pilot) for the duration of the work shift, as much as possible;
- Avoid sharing material and equipment (tablets, pencils, communication devices such as microphones, megaphones, etc.);
- Do not set the vehicle's ventilation system in "recirculation" mode; properly ventilate the vehicle by opening the windows when possible;
- The person must wear a procedure (surgical) mask; ask him or her to clean their hands with disinfectant or a disinfectant wipe;
- If the vehicle is equipped with a sealed plexiglass partition, the person is not required to wear a procedure mask. If in doubt, have the person wear a procedure mask.
- In situations where the person cannot wear a mask (for example, he or she has respiratory difficulties), the officers must wear a procedure (surgical) mask and nitrile gloves when inside the vehicle;
- When possible, use a patrol vehicle equipped with a sealed partition to transport detainees;
- If the vehicle is not equipped with a partition, the officers must follow the following instructions when inside it:
  - If the person has no apparent COVID-19 symptoms, wear nitrile gloves and a procedure (surgical) mask.
  - If the person has COVID-19 symptoms, wear nitrile gloves, a procedure (surgical) mask and protective eyewear.
- **Following transport**, use wipes to disinfect hard surfaces and surfaces that were frequently touched (for example: steering wheel, computer, radio, armrest, door handles, patrol bag, etc.), as well as the entire rear cabin. Make sure you are wearing nitrile gloves.
- Remove your nitrile gloves from the inside out so that they do not directly touch your skin. Throw them away in a plastic bag to avoid contaminating the waste bin.

## Be aware of changes in your state of health:

1. If you start experiencing symptoms (fever, coughing, difficulty breathing), isolate yourself from others as soon as possible and promptly inform your manager.
2. Call the information line at 1 877-644-4545 to have a nurse assess your state of health and make recommendations based on your situation.

COVID-19

COVID-19

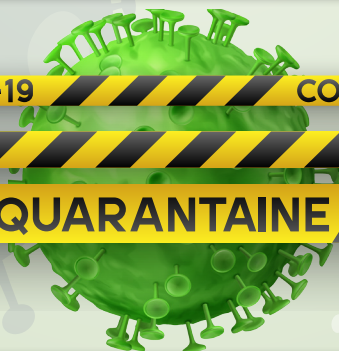
COVID-19

COVID-19

QUARANTAINE

QUARANTAINE

QUARANTAINE



## Keep in mind:

Current scientific data does not indicate with certainty how long the virus can survive on surfaces. However, preliminary information tends to show that the virus can live on surfaces for a few hours to several days. This can depend on various parameters, such as:

- temperature
- type of surface
- ambient humidity

Take the time to properly disinfect your equipment, your vehicle and your immediate environment. The appropriate products are available to you in sufficient quantity.